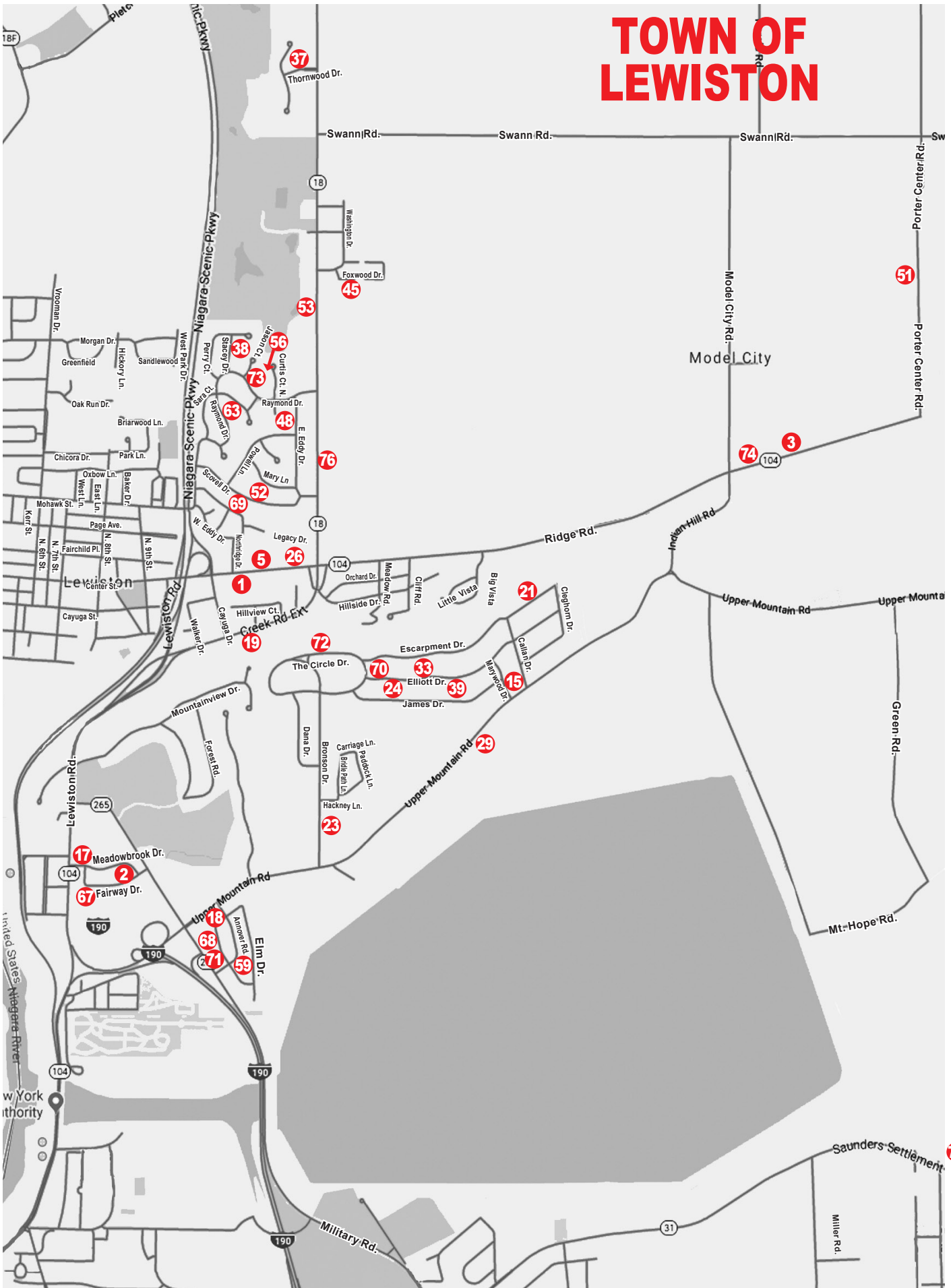


TOWN OF LEWISTON



- 1. 706 RIDGE ROAD** – Fri., Sat. & Sun. 9am-3pm. Backyard/indoor; office supplies, puzzles, collectibles, handyman, fishing, Christmas, books, linens, garden, tools/decor, housewares, much more!
- 2. 551 FAIRWAY DRIVE** – Sat. & Sun. 9am-3pm. Piano, organ, tools, household items, books, board games, purses, shelving units, picture frames, and more!
- 3. 1461 RIDGE ROAD** – Fri. & Sat. 8am-4pm; Sun. 8am-3pm. Books, shoes, men/women/children/baby clothing, baby items, household items, kitchenwares, toys, wooden doll house.
- 5. 737 RIDGE ROAD** – Fri. & Sat. 9am-4pm; Sun. 9am-1pm. Multi-family, household items, furniture, vintage electronics, plants, lots of good items.
- 15. 5059 MARYWOOD DRIVE** – Fri. & Sat. 9am-5pm; Sun. 11am-4pm. Multi-family: Heavy machinery, many tools, boat supplies, housewares, fixtures, decor, clothing, toys, giveaways and more!
- 17. 495 MEADOWBROOK DRIVE** – Fri. & Sat. 9am-3pm. Sports jerseys, golf clubs, guardian pots, glassware, dishes, furniture, lamps, office, framed pictures and more.
- 18. 670 UPPER MOUNTAIN ROAD** – Fri. & Sat. 9am-3pm. Household, decor, women's clothing, Christmas, books & many misc.
- 19. 4957 CREEK ROAD EXT.** – Fri. & Sat. 8:30am-3pm. Toys, household items, free items.
- 21. 1135 ESCARPMENT DRIVE** – Fri., Sat. & Sun. 10am-4pm. Furniture, antiques, collectibles, home goods, children's toys and clothes.
- 23. 5253 BRONSON DRIVE** – Sat. & Sun. 9am-5pm. Clothes, books, household items, toys, sporting goods.
- 24. 896 ELLIOTT DRIVE** – Fri. 1pm-4pm; Sat. 10am-2pm; Sun. 11am-2pm. Home decor, children's/toddler books and toys.
- 26. 775 RIDGE ROAD** – Fri. & Sat. 8am-4pm; Sun. 9am-2pm. Multi-family sale. A little of everything!
- 29. 1040 UPPER MOUNTAIN ROAD** – Fri., Sat. & Sun. 9am-2pm. Name brand clothing, purses, jewelry, kids clothing, baby clothing, toys, housewares, antiques.
- 33. 943 ELLIOTT DRIVE** – Sat. 10am-4pm. Multi-family; no early birds. Estate jewelry, Pfaltzgraff/Mikasa Christmas items, bric-a-brac, glassware, frames, thingamabobs, miscellaneous items.
- 37. 795 THORNWOOD DRIVE** – Fri. & Sat. 8am-4pm. Furniture, artwork, decor items, vintage Barbies, new Onyko home theater system, rugs, kitchen gadgets.
- 38. 4683 STACEY DRIVE** – Fri., Sat. & Sun. 8am-4pm. Girls clothes 10-14, kids desk, ice cream machine, books, toys, Precious Moments, DVD's, craft supplies.
- 39. 986 ELLIOTT DRIVE** – Fri. & Sat. 8am-3pm; Sun. 10am-2pm. Neon bar lights, bar mirrors, 12 x 10 gazebo (new canopy), pictures, antiques, glassware, ceramic/silver dishes.
- 45. 832 FOXWOOD DRIVE, APT. 13** – Fri. 2pm-5pm; Sat. 10am-5pm; Sun. 1pm-5pm. Grill, end tables, kitchen items, linens, household items, electronics.
- 48. 4772 EAST EDDY DRIVE** – Fri. & Sat. 9am-3pm. Household items, lots of women's clothing M-2XL, pet supplies for dogs, tools & much more!
- 51. 4598 PORTER CENTER ROAD** – Sat. & Sun. 8am-4pm. Big variety; many new items in packages, little bit of everything, come and check it out!
- 52. 733 SCOVELL DRIVE** – Fri. & Sat. 9am-3pm. High kitchen table w/6 chairs, faux leather recliner, household items, women's clothing, shoes size 10, lots more!
- 53. 4624 CREEK ROAD** – Fri. & Sat. 8am-3pm. Perennials, household tools, sporting goods, children's clothing, toys, games, books, bikes, pack-n-play, and much more!
- 56. 4694 CURTIS COURT NORTH** – Sat. 8:30am-6pm; Sun. 8:30am-5pm. Downsizing Sale. Furniture, recreation & sports, small appliances, kitchenware, holiday goods, clothing and tools.
- 59. 5391 ANNOVER DRIVE** – Fri. & Sat. 8am-3pm; Sun. 8am-11am. Home decor, household, antiques, furniture, golf, tools, men/women/kid clothing, toys, humidifier, DVD's & player.
- 63. 670 RAYMOND DRIVE** – Sat. 9am-4pm. Large variety of items including household, toys, games & books.
- 67. 510 FAIRWAY DRIVE** – Fri., Sat. & Sun. 9am-4pm. Antiques, furniture, bric-a-brac, collectibles, artwork and lamps. A little bit of everything.
- 68. 5318 ELM DRIVE** – Fri., Sat. & Sun. 8am-3pm. Women/men/kids clothes, shoes, accessories, toys, home goods/housewares and more!
- 69. 718 SCOVELL DRIVE** – Sat. 9am-4pm. Baseball/hockey cards, girls clothes size 8-12, Monster High castle, girls bike, kitchen, designer purses.
- 70. 876 ESCARPMENT DRIVE** – Fri. & Sat. 9am-1pm. Home decor, antiques, collectibles, toys, clothing, knick-knacks, holiday decorations.
- 71. 5302 ELM DRIVE** – Fri. & Sat. 8am-1pm. Household items, clothing, miscellaneous Nascar memorabilia.
- 72. 814 THE CIRCLE DRIVE** – Sat. & Sun. 9am-3pm. Office furniture, bicycles, dishwasher, appliances, furniture, housewares, patio furniture, bookshelves, electronics, and more!
- 73. 4707 JASON COURT** – Fri. & Sat. 10am-2pm. Household Blow Out! Furniture, clothing, housewares, antiques, Lots of Everything!
- 74. 1437 RIDGE ROAD** – Fri., Sat. & Sun. 9am-4pm. Household items, tools & antique horsedrawn items.
- 75. 1937 SAUNDERS SETTLEMENT ROAD** – Fri., Sat. & Sun. 9am-4pm. Multi-family! Furniture, household items, electronics, books, lots of toys. Priced to sell.
- 76. 4785 CREEK ROAD** – Fri. & Sat. 8am-4pm. Large Multi-family sale. Too much to list, many miscellaneous items, baby stuff. Don't miss out!